

KDE Community Websites

What can online communities do for
the free desktop ?

Topics

Topics

- The PAST of the KDE community websites

Topics

- The PAST of the KDE community websites
- The PRESENT of KDE today

Topics

- The PAST of the KDE community websites
- The PRESENT of KDE today
- The FUTURE: My vision for KDE

Topics

- The PAST of the KDE community websites
- The PRESENT of KDE today
- The FUTURE: My vision for KDE
- Questions

PAST

the KDE community websites

history ...

KDE User since 1998

KDE-Look.org in 2001

Artwork Community and
Collaboration Platform

Users become Contributors

Even if they are not developers !

Artwork community grew from
2 to thousands

No top-down moderation

Power to the people!

YOU decide what is good content
(voting/comments)

KDE-Apps.org launched in 2003

2004 "Get Hot New Stuff"

openDesktop.org in 2007

Collaboration with other free
software projects
GNOME / Xfce /

interconnected

Sharing:

- wallpapers
 - icons
 - sounds
 - fonts
 - Mouse Themes
 - other
-
- User Login

Over 30 websites for free
software projects

Focus on KDE websites

Website:

- KDE-Look.org
- KDE-Apps.org
- KDE-Files.org
- Qt-Apps.org
- CLI-Apps.org
- GTK-Apps.org
- GNOME-Look.org
- Java-Apps.org
- Compiz-Themes.org
- [Debian, openSUSE, Ubuntu, Kubuntu and Gentoo - Linux](#)
- openTemplate.org
- GIMPStuff.org
- InkscapeStuff.org
- BlenderStuff.org
- ScribusStuff.org
- more

60 million
page impressions per month

over 100 000 registered users

5 TB Traffic

PRESENT

the state of KDE today

Feature equality with Windows and OS X

(more or less)

KDE is:

- free

KDE is:

- free
- fast

KDE is:

- free
- fast
- secure

KDE is:

- free
- fast
- secure
- feature rich

KDE is:

- free
- fast
- secure
- feature rich
- easy to use

KDE is:

- free
- fast
- secure
- feature rich
- easy to use
- customizable

KDE is:

- free
- fast
- secure
- feature rich
- easy to use
- customizable
- beautiful

with much **less** developers and resources

how is this possible ?

- big friendly worldwide family of developers and users

- big friendly worldwide family of developers and users
- working in our spare time

- big friendly worldwide family of developers and users
- working in our spare time
- friends

- big friendly worldwide family of developers and users
- working in our spare time
- friends
- passion for KDE

- big friendly worldwide family of developers and users
- working in our spare time
- friends
- passion for KDE
- helping others in LUGs and on the internet

- big friendly worldwide family of developers and users
- working in our spare time
- friends
- passion for KDE
- helping others in LUGs and on the internet
- Spending our Vacation at Akademy

- big friendly worldwide family of developers and users
- working in our spare time
- friends
- passion for KDE
- helping others in LUGs and on the internet
- Spending our Vacation at Akademy
- work for fun not for money

- big friendly worldwide family of developers and users
- working in our spare time
- friends
- passion for KDE
- helping others in LUGs and on the internet
- Spending our Vacation at Akademy
- work for fun not for money
- Community

But ..

less than 1% market share

Why ?

How can we get 10% ?

How can we get 10% ?

or 20%

a real reason to switch !

focus on our strong points

deliver what microsoft or apple
can't deliver

Windows should appear incomplete
compared with KDE

What could this be ?

our Community

Community to the
Desktop !

FUTURE

My vision of the future of KDE

The Social Desktop

Welcome **nEW** users into the **family**

Examples :

Default KDE 4.1 Desktop

Desktop



13:54

Where is our Community ?

Showing other KDE users near me

Desktop

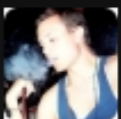
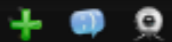
KDE Users near you



Frank Karlitschek (Brussel)



Hans Maier (Mechelen)



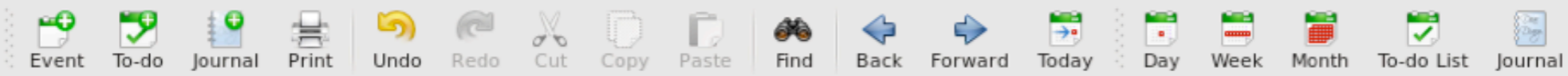
John Dow (Antwerpen)



13:54

How to meet the Community ?

Showing interesting KDE events near me



Mon 4 ... Tue 5 ... Wed 6 ... **Thu 7** ... Fri 8 ... Sat 9 ... Sun 10

August 2008

	Mon	Tue	Wed	Thu	Fri	Sat	Sun
31	28	29	30	31	1	2	3
32	4	5	6	7	8	9	10
33	11	12	13	14	15	16	17
34	18	19	20	21	22	23	24
35	25	26	27	28	29	30	31
36	1	2	3	4	5	6	7

Search Select Categories

Summary Recurs Pr

Click to add a new Flat View

Calendar + - x

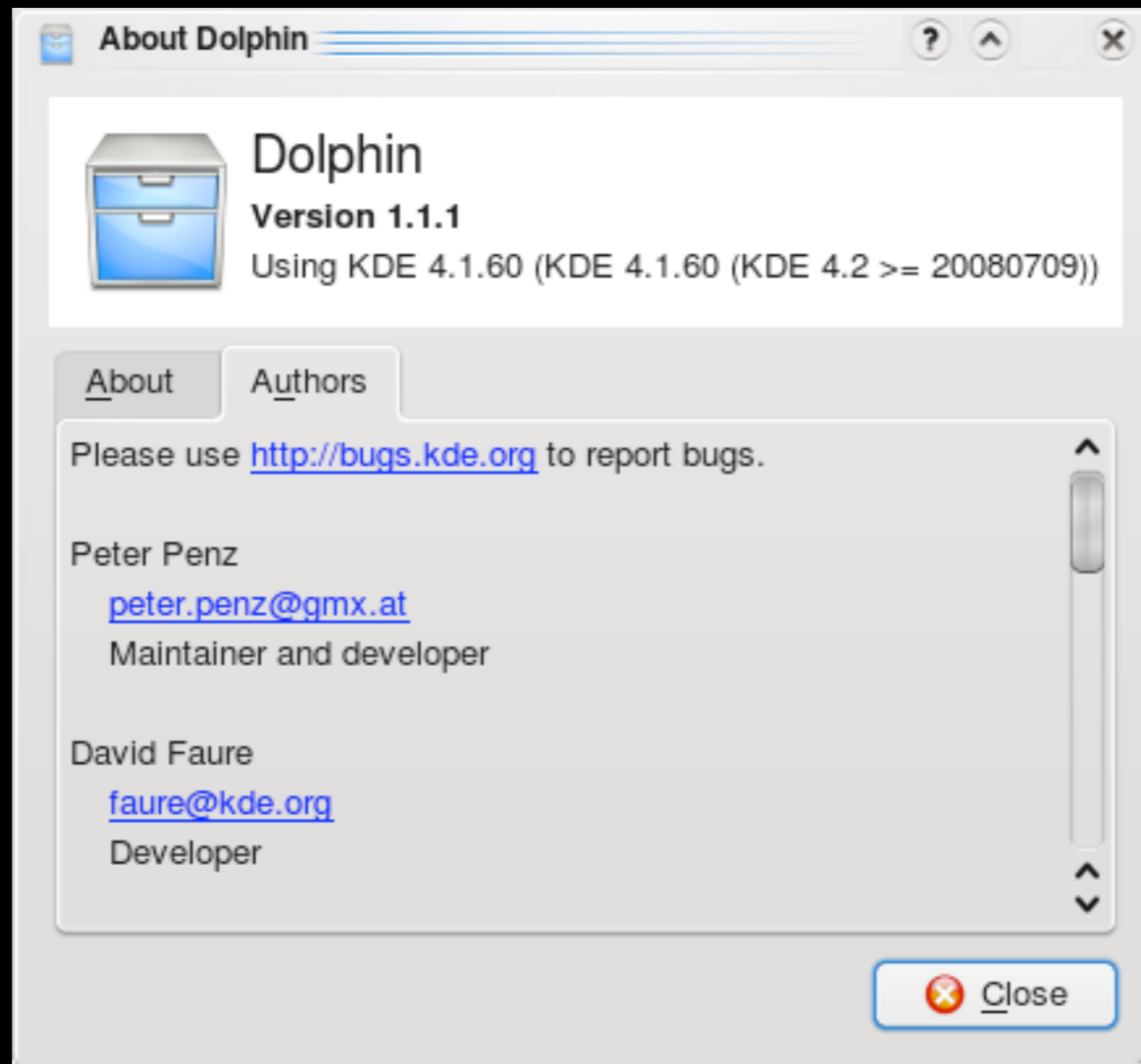
- Default Calendar
- Birthdays
- community

10 ⁰⁰						
11 ⁰⁰						
12 ⁰⁰						
13 ⁰⁰						
14 ⁰⁰						
15 ⁰⁰						
16 ⁰⁰						
17 ⁰⁰						
18 ⁰⁰						
19 ⁰⁰						
20 ⁰⁰						
21 ⁰⁰						
22 ⁰⁰						
23 ⁰⁰						

18:00
KDE
Usergroup
Brussel

17:00
LUG
Mechelen

Who are the developers ?

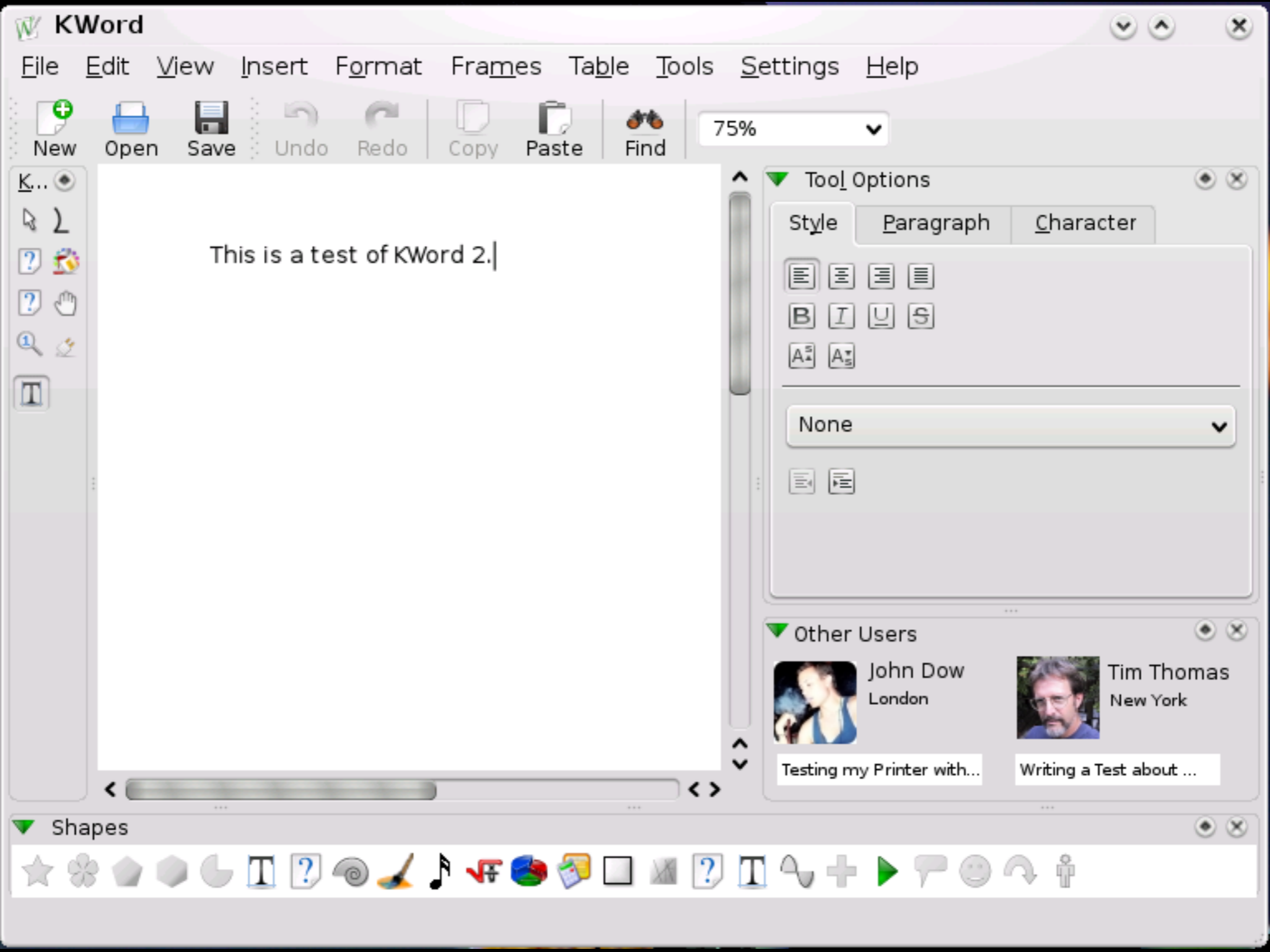


Show pictures of the developers
Become friend of a developer
Become a fan of an application



How can the community help me with my
work ?

Show other KDE users who worked on a
similar document



Privacy Control !

How can the community help me with
hardware problems?

Show other KDE users with similar hardware
near me

Print - Kate [?] [^] [X]

Printer

Name: hp1600 [v] **Properties**

Location: Local file Find other People with this Printer

Type: Write Postscript file

Output file: /home/kdedev/Untitled.pdf ...

Copies Options Pages Job Text Settings Header & Footer Layout

Print range

Print all

Pages from 1 [v] to 1 [v]

Output Settings

Copies: 1 [v]

Collate

Reverse

Options << **Print** **Cancel**

How can the community help me with
software problems?

- ? Welcome to KDE
- ? KDE Users' Manual
- ? Application Manuals
 - + Graphics
 - + Internet
 - + Office
 - + Other
 - + Programming
 - + Sound & Video
 - System Tools
 - **Dolphin**
 - + File Manager - Super
 - + KInfoCenter
 - + Konsole
 - + Konsole
 - + Krfb
 - + System Monitor
 - + System Settings



The Dolphin Handbook

[Next](#)

The Dolphin Handbook

Peter Penz <peter.penz@gmx.at>

Orville Bennett <obennett@hartford.edu>

Michael Austin <tuxedup@users.sourceforge.net>

David Edmundson <kde@davidedmundson.co.uk>

Alan Blanchflower

Revision 1.0.2 (2008-03-05)

Copyright © 2006 Peter Penz

Copyright © 2006 Orville Bennett, Michael Austin

[Legal Notice](#)

Dolphin is a file manager for KDE designed with usability as a

Show a knowledge base directly in the
application

Search

Contents Glossary

- ? Welcome to KDE
- ? KDE Users' Manual
- ? Application Manuals
 - + Graphics
 - + Internet
 - + Office
 - + Other
 - + Programming
 - + Sound & Video
 - System Tools
 - **Dolphin**
 - + File Manager - Super
 - + KInfoCenter
 - + Konsole
 - + Konsole
 - + Krfb
 - + System Monitor
 - + System Settings



The Dolphin Handbook

Search

A file is invisible **solved**

9 comments



Max Müller
Hamburg

How can I find a file? **not solved**

24 comments



Thomas Jones
Los Angeles

How can I configure the preview ? **solved**

2 comments



Max Müller
London

Delete doesn't work **solved**

2 comments



Tim Exner
Berlin

How can we achieve this ?

Standard API

Proposing the

“Open Collaboration Services”

Important points are:

- Privacy settings
- No lock-in to a specific service provider or website
- Scalability
- Easy to use

www.open-collaboration-services.org

[www.freedesktop.org/specs/
opencollaborationservies](http://www.freedesktop.org/specs/opencollaborationservies)

first draft today

Open Collaboration Services

draft 1

Modules:

- USER (Search, Friends)
- USERACTIVITIES
- MESSAGES
- CONTENT (Content Downloading)
- KNOWLEDGE

openDesktop.org websites support
draft 1

Hope other website join soon

How you can help:

- Discuss the Social Desktop / Draft 1
- Write Plasmoids
- Akonadi Integration
- Decibel Integration
- App Integration

BOF Session

Question ?

Thank you

Frank Karlitschek
karlitschek@kde.org
blog.karlitschek.de
twitter.com/fkarlitschek