



AKONADI



<what are we talking about here?>

Akonadi Clients

Anything that uses Akonadi

Akonadi::AgentBase

Managed by Akonadi

Online/Offline support

Monitoring changes

Akonadi::ResourceBase

Interface to request data:

```
    retrieveCollections()  
retrieveItems( const Collection &col )  
retrieveItem( const Item &item )
```

<  onadi >

KFacebook (1)

- Facebook web service (REST-like)
- read only interface (to drive web traffic)
- Most useful information intentionally inaccessible
- libkfacebook – library for communicating with Facebook web service
- status, Friends list, groups, events, photo albums, ...

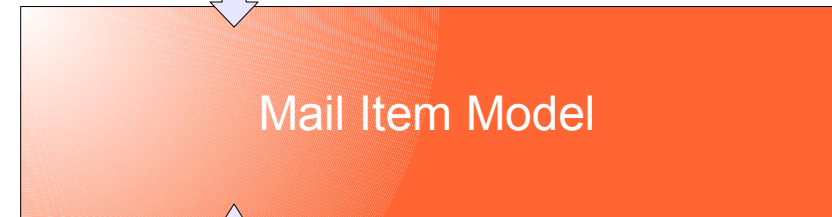
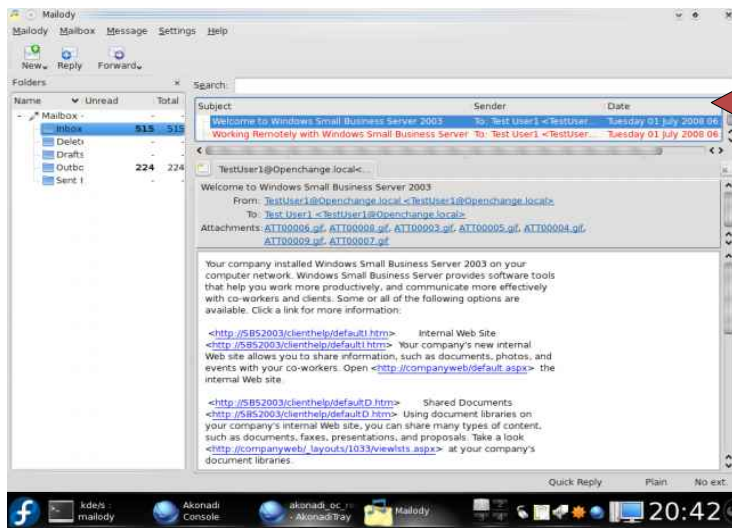
KFacebook (2)

- Akonadi
 - Addressbook resource exposes friends list
 - Calendar resource exposes events
- Plasma
 - Contact list + status updates (like KDE Twitter)

KFacebook (3)

- TODO (old and dusty)
 - Check that it still works
 - Extend for new Facebook API
 - Finish resources and port to new Akonadi API
 - Port applet to new Plasma API

<email threading>



Akonadi Server

potential parents

maildir resource

IMAP resource

threading agent

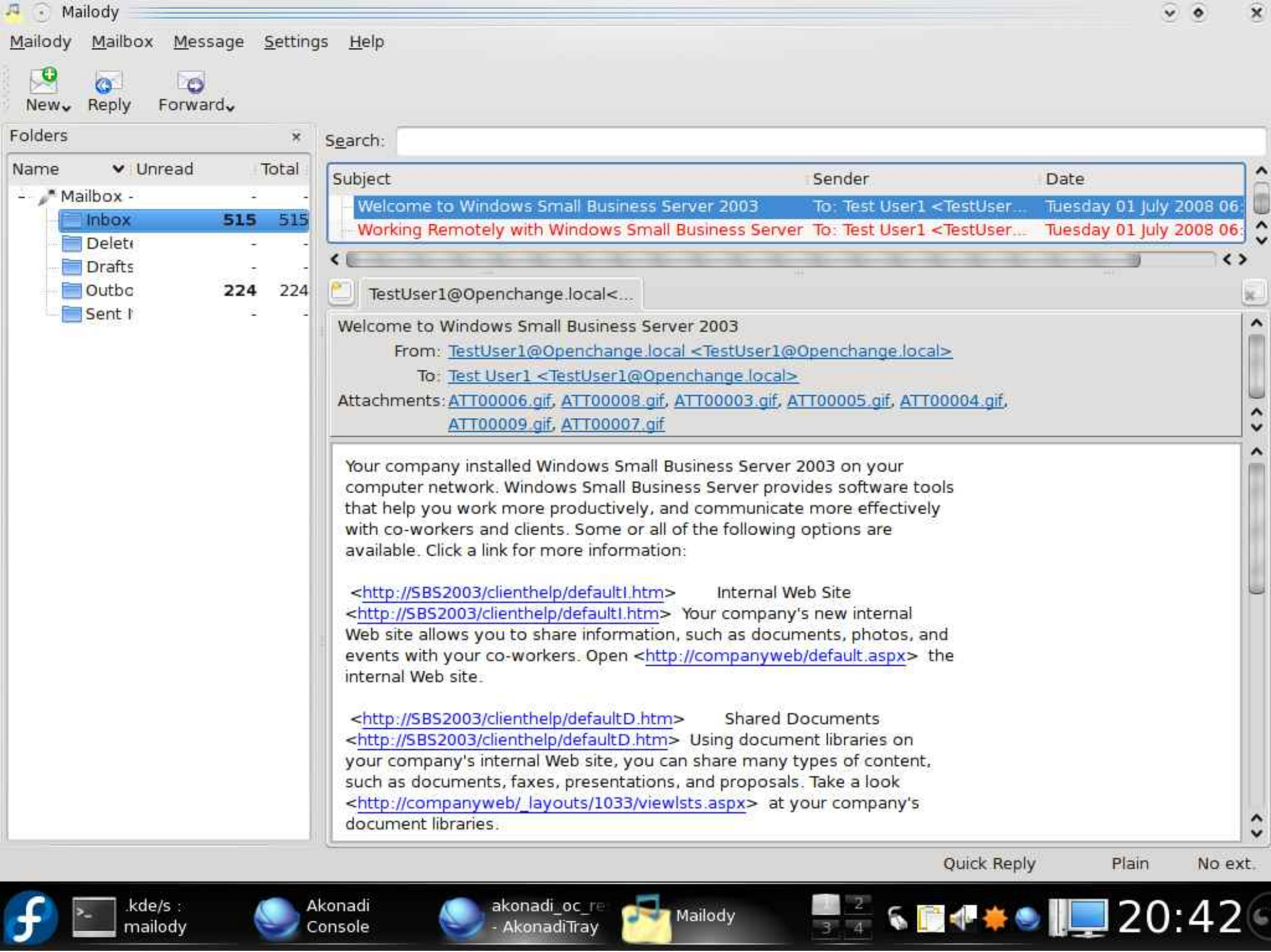
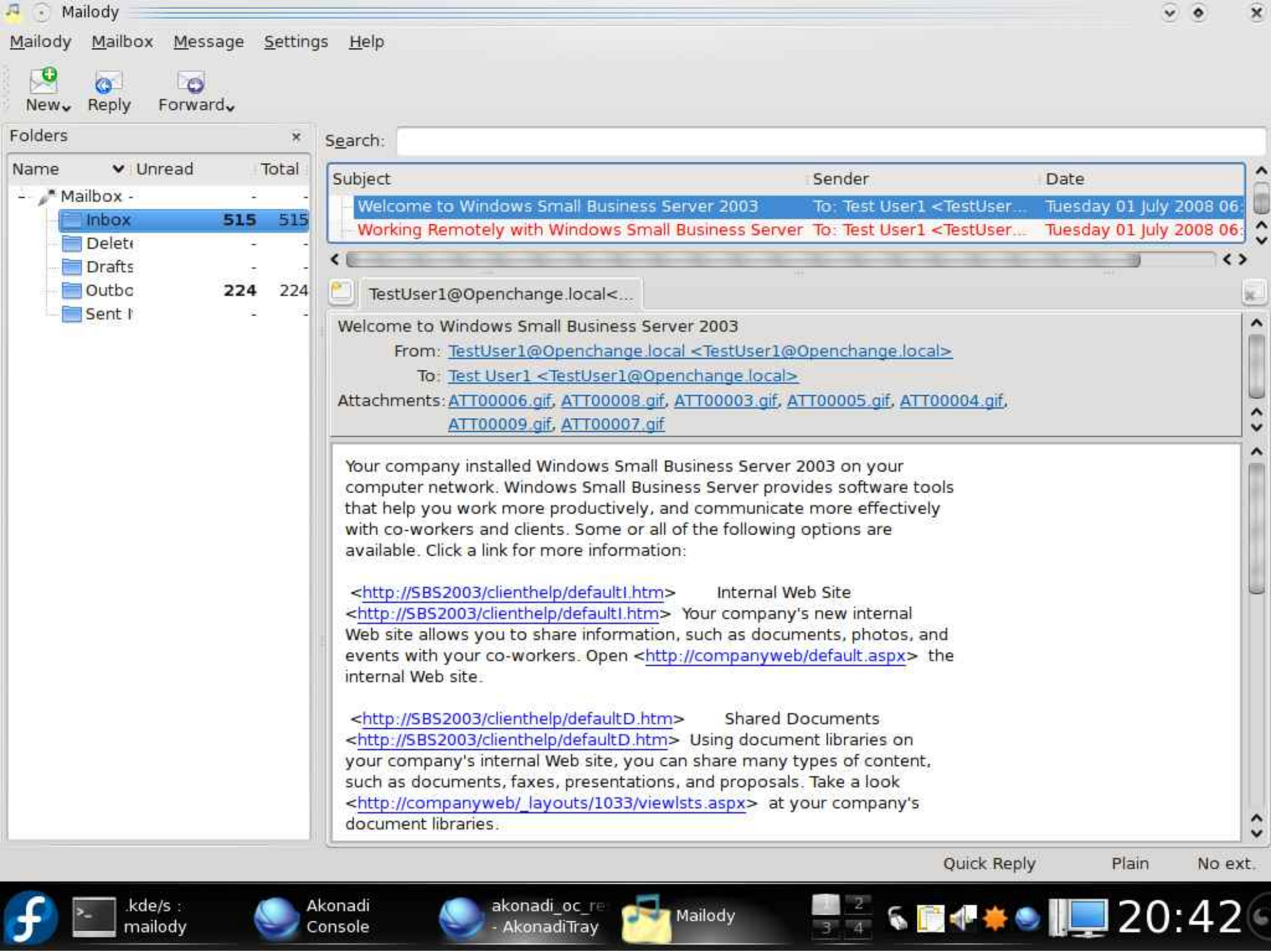
strigi feeder agent

strigi

<exchangonadi>

OpenChange Resource

- Allows Akonadi clients to access Microsoft Exchange servers
 - Native Exchange RPC protocols
 - Mail
 - Appointments / Calendaring
 - Tasks, Notes, Journal...
- Alpha quality, aiming for KDE 4.2



Calendering

The screenshot shows the Akonadi Console application window. The title bar reads "Akonadi Console". The menu bar includes "File", "Edit", "Collection", "Item", "Settings", and "Help". Below the menu bar are tabs for "Agents", "Resources", "Browser", and "Debugger". The "Browser" tab is active, showing a tree view of the "Mailbox - Alan Alvarez (OpenChange)" collection. The tree includes folders for "Calendar", "Contacts", "Deleted Items", "Drafts", "Inbox", "Journal", "Junk E-mail", "Notes", "Outbox", "RSS Feeds", "Sent Items", "Sync Issues", and "Tasks". The "Calendar" folder is selected, and a table of events is displayed.

Model: Calendar

| Summary | Start date and time | End date and time | Type |
|------------------|---------------------|-------------------|-------|
| Appointment Test | 2008-08-20 | 2008-08-21 | Event |

Below the table are tabs for "Payload", "Attributes", "Raw Payload", and "Internals". The "Payload" tab is active, showing the following iCalendar data:

```
BEGIN:VEVENT
DTSTAMP:20080806T182733Z
ATTENDEE;CN=Alan Alvarez;RSVP=FALSE;PARTSTAT=NEEDS-ACTION;ROLE=CHAIR:
mailto:alan.alvarez@alienchange.net|
ATTENDEE;CN=Alan Alvarez;RSVP=FALSE;PARTSTAT=NEEDS-ACTION;
ROLE=OPT-PARTICIPANT:mailto:alan.alvarez@alienchange.net
ATTENDEE;CN=Administrator;RSVP=FALSE;PARTSTAT=NEEDS-ACTION;
ROLE=REQ-PARTICIPANT:mailto:Administrator@alienchange.net
CREATED:20080730T210831Z
UID:libkcal-1591618685.873
LAST-MODIFIED:20080806T181653Z
DESCRIPTION: <<alien-web.gif>> <<New Text Document.txt>> This is a test
appointment for akonadi development\r\nÃ Å-)
SUMMARY:Appointment Test
CLASS:PRIVATE
ATTACH;VALUE=BINARY;FMTTYPE=image/gif;ENCODING=BASE64;
X-LABEL=alien-web.gif:
R0IGODlhYwBjAPcAAAAAAAAAMwAAZgAAmQAAZAAA/wAzAAZMwAzZgAzmAzzAAz/wBmAABmMw
Bm
ATTACH;VALUE=BINARY;FMTTYPE=text/plain;ENCODING=BASE64;X-LABEL=New Text
Document.txt:
aHR0cDovL3NjaGVtYXMuYwBjcm9zb2Z0LmNvbS9tYXBpL2lkL3swMDA2MjAwNC0wMDAwLTAwMD
```

A "Save" button is located at the bottom right of the window.

More Calendaring

Configure

Name

Mailbox - Alan Alvarez (OpenChange)

Calendar

Journal

Tasks

Summary

Start date and time

End date and time

Type

Appointment Test

2008-08-20

2008-08-21

Event

Appointment Test

Time

2008-08-20 - 2008-08-21

<<alien-web.gif>>

<<New Text Document.txt>>

This is a test appointment for akonadi development

Organizer

• Alan Alvarez

Attendees

• Alan Alvarez

• Administrator

2 attachments

Creation date: 2008-07-30 21:08

Implementation

- Makes use of:
 - KDE PIM Akonadi libraries
 - kdepimlibs
 - C++ wrapper over an OpenChange library...
 - ...which in turn uses some Samba4 libraries
- Future
 - Access over HTTP (“Outlook Anywhere”)
 - Free / busy, public folders
 - Offline Address Book

More Information

- Brad Hards (bradh@kde.org)
 - bradh on Freenode – try #openchange or #akonadi
- Alan Alvarez
 - clsk or klsc on Freenode
- <http://www.openchange.org>
- Source in KDE subversion repository

<plasmobiff>

<KPilot does Akonadi>

Akonadi Console

File Edit Collection Item Settings Help

Agents Resources **Browser** Debugger

Name ▼ Model: **Contacts** ▼

| Given Name | Family Name |
|----------------|--------------|
| Gerrie | Broeksema |
| Anita | Odink |
| Peter | Fokkinga |
| Sarah | van der Horn |
| Bert | Eefting |
| Maarten | Wegen |
| Jan | Teekens |
| P. | Eisenga |
| Robert | Linde |
| Erik Broeksema | (jr.) |
| Jeroen | van der Wal |
| A. | Knol |
| Bram | Urbanus |
| Aurelia | Baron |
| Jochem | - |
| Marco | - |
| Sem | - |
| Jan Bert | - |

Search

Payload **Attributes**

The watched

Save

KPilot

File Settings Help

HotSync Backup Reset Link

HotSync

Version: KPilot 5.0.2-alpha1 (fjord)
Version: pilot-link 0.12.3
Version: KDE 4.1.60 (KDE 4.1.60 (KDE 4.2 >= 20080709))
Version: Qt 4.4.0

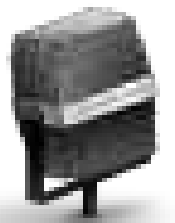
HotSync Log

22:47:04 Daemon status is 'Waiting for sync'
 22:47:08 Next HotSync will be: HotSync. Please press the HotSync button.
 22:47:14 Next HotSync will be: HotSync. Please press the HotSync button.
 22:47:15 *Pilot device /dev/ttyUSB1 does not exist. Probably it is a USB device and will appear during a HotSync.*
 22:47:15 Next HotSync will be: HotSync. Please press the HotSync button.
 22:47:21 Checking last PC...
 22:47:21 KPilot 5.0.2-alpha1 (fjord) HotSync starting...
 22:47:21 Using encoding ISO-8859-15 on the handheld.
 22:47:21 [Conduit contacts-conduit]
 22:47:23 Invalid record mapping. Doing first sync.
 22:47:23 HH data proxy: Start: 87. End: 87. No changes made.
 22:47:23 PC data proxy: Start: 0. End: 87. 87 new record(s).
 22:47:24 End of HotSync
 22:47:25 HotSync Completed.
 22:47:25 Next HotSync will be: HotSync. Please press the HotSync button.

Clear Log Save Log...

Sync progress: 100%

<IM-onadi>



Decibel and Akonadi

- Decibel is the KDE 4 realtime communications layer
- Kopete used KABC UIDs to relate IM contacts to addressbook entries for desktop integration
- Kopete is to be merged with Decibel

<bridges>